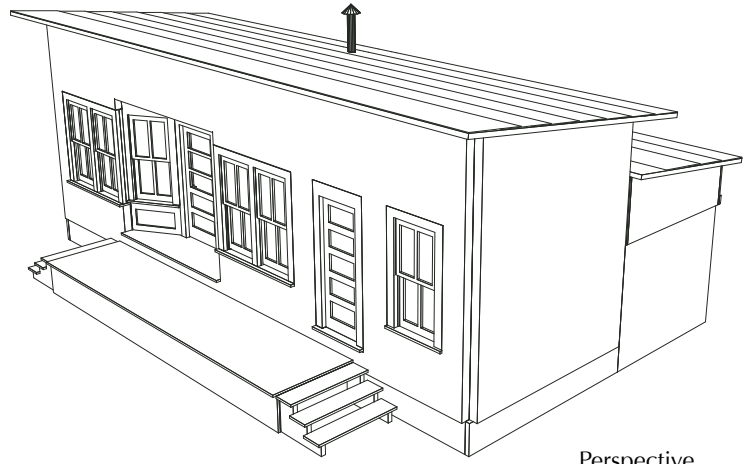




LASER - CUT MODEL KITS
WWW.KINGMILL.COM - 434.979.7280
MADE IN THE USA



Perspective

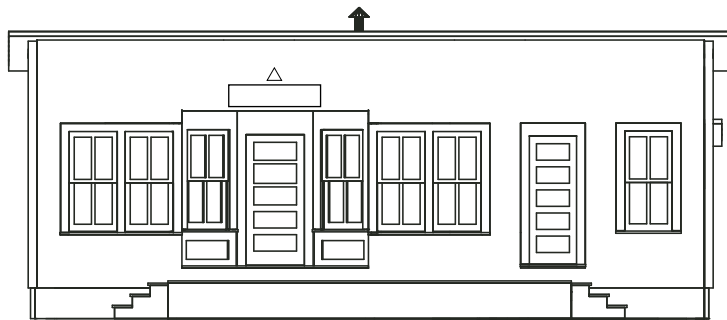
Nella Country Store & Post Office

The Nella Country Store and Post Office prototype was on the Abingdon branch of the N&W in Husk, N.C.. The railroad wanted to name the stop "Allen" but there was already a town named Allen so they reversed the letters to name it "Nella". The U.S. Post office officially called the town "Husk". Stop on in, pick up your mail and have a soda while petting the old dog "Jimbo" and watch the evening train roll past. Generic signage included so it will fit in on any layout.

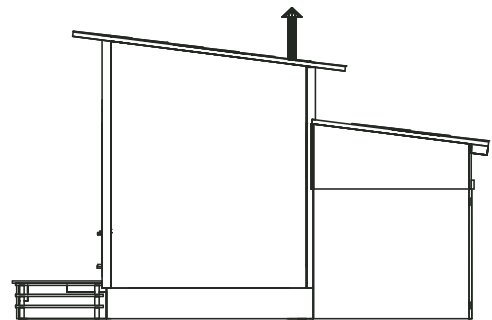
The following instructions are presented in the recommended assembly order. Experienced modelers may want to assemble the kit in an alternate order. If you choose to deviate from the instructions, read the instructions thoroughly before proceeding and take care to test fit parts before gluing them in place. If any items are missing from the kit, call or email us for replacements. Suggestions regarding improvements to current kits or ideas for future kits are always welcome.

Chris Jessee, Owner chris.jessee@kingmill.com

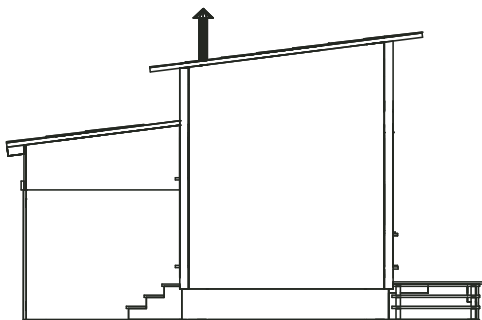
Elevations Not to Scale



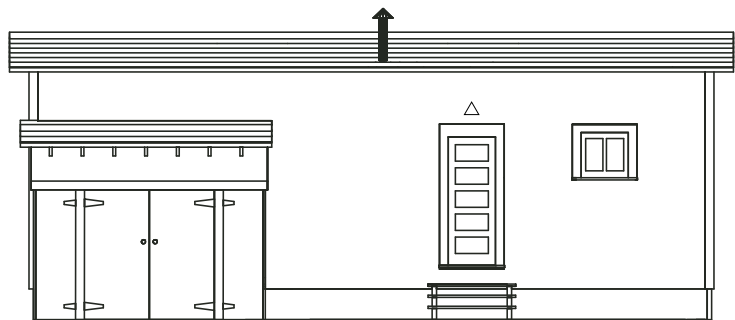
Front



Right



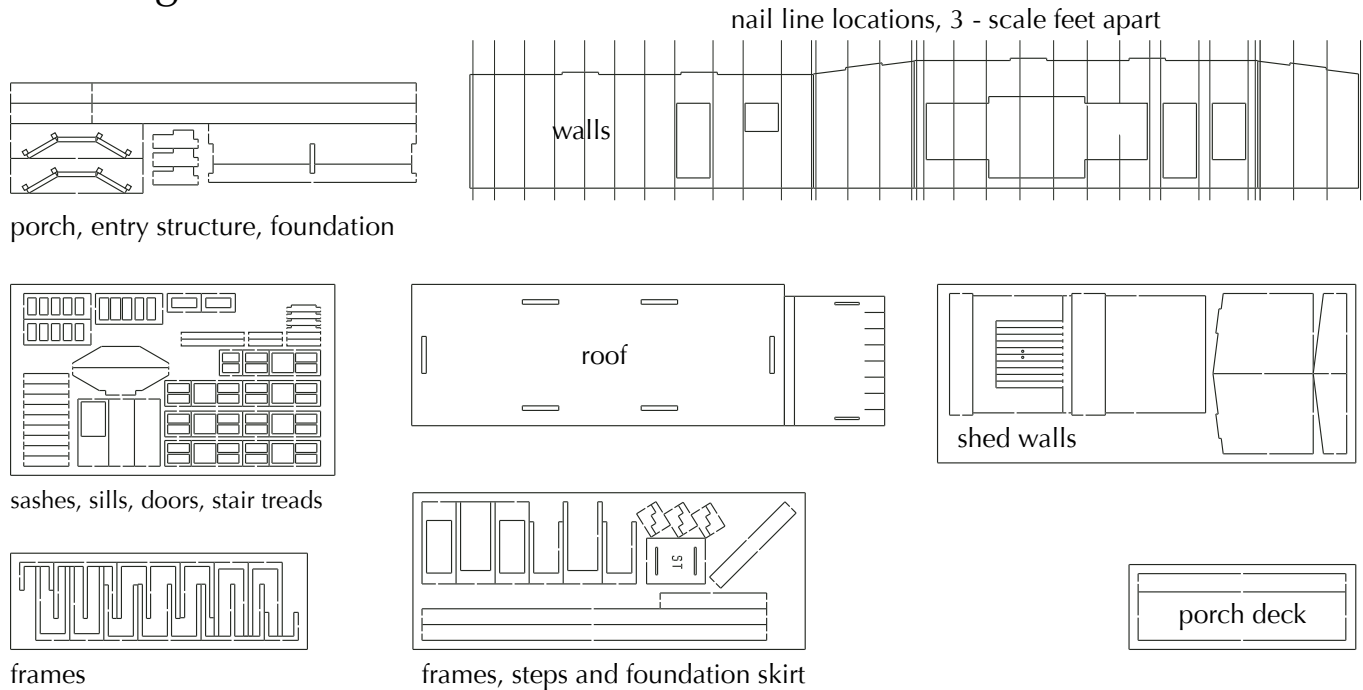
Left



Back

This kit is a craftsman model. Keep away from children. Contains small parts. Choking hazard. Cast metal parts may contain lead.

Parts Diagram Not to Scale



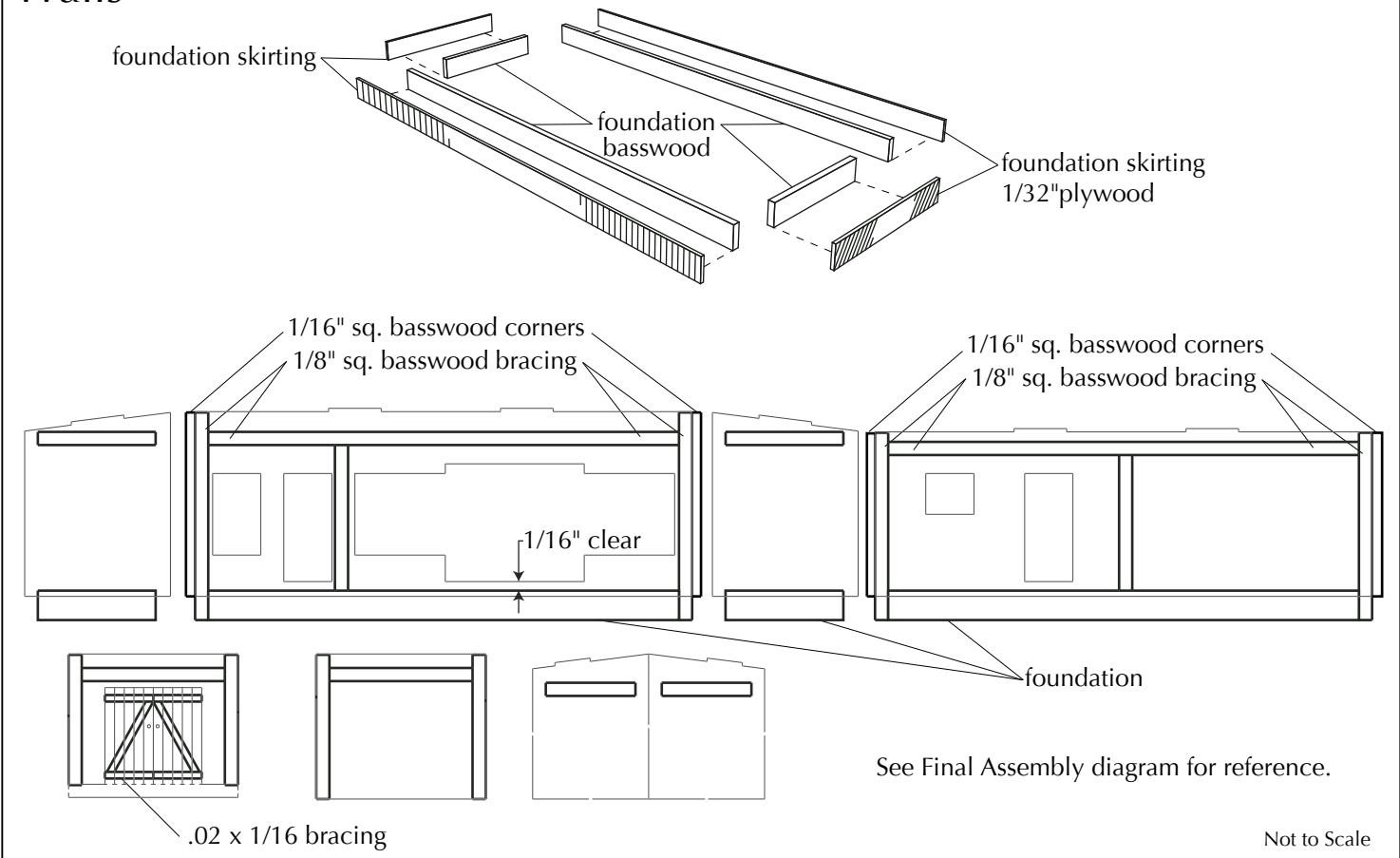
Additional items:

1. Signs: post office, Nella, Husk, 2 sheets various posters
 2. Plastic details: (2) lamps with buckets
 3. White metal castings: (1) pack - including stove pipe, drums, crates, oil tank, etc.
 4. Sign hanger (.015 wire)
 5. (1) telephone pole (1/8" dia. dowel)
 6. Wall reinforcing bars (1/8" sq. basswood) - (5) 8" lengths
 7. Corner posts (1/16" sq. basswood) - (2) 8" lengths
 8. Trim (.02 x 1/16 basswood) - (4) 4" lengths
 9. Roofing: Tarpaper (craft paper) - (8) 8" strips,
 10. Window glass (clear polyester) - (1) square
 11. Misc paper items: Strap Hinges (craft paper), Cardboard boxes (craft paper), Newspapers
 12. Outhouse
- Suggested Paint Colors (Polly Scale brand) - Reefer White, Antique White, Rust, Boxcar Red, Dirt, Grimy Black.

Getting Started

1. Before assembling any parts prepare and prime metal and plastic parts as described in the Tips section.
2. Paint window and door frames, doors and window sashes Polly Scale Boxcar Red or your choice of color using a soft brush or airbrush and set aside to dry. Do not remove frames from carrier sheet to paint. Mask off adjacent parts with masking tape prior to painting. Two thin coats of paint will look better than one thick coat.

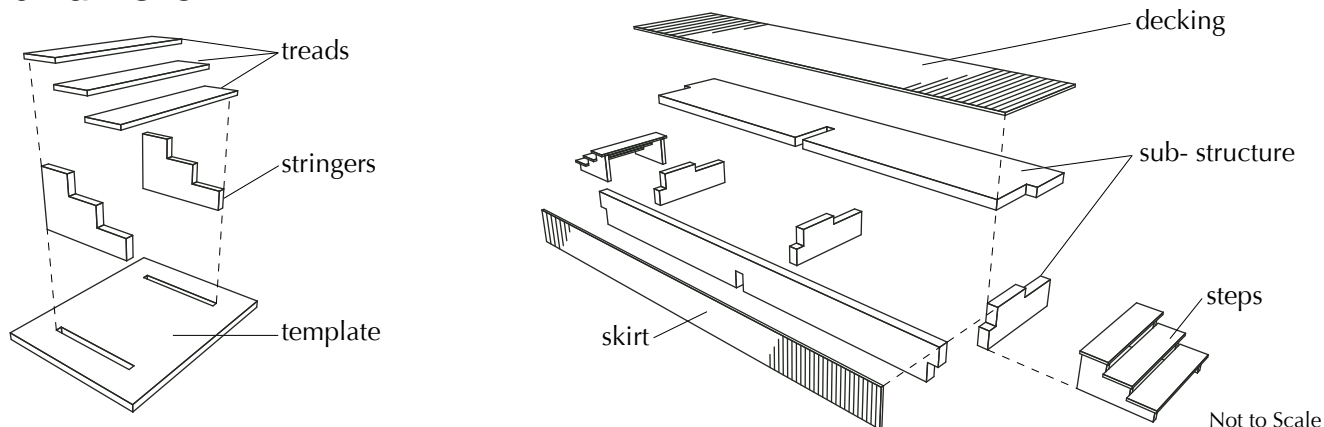
Walls



Walls:

1. Glue foundation skirting to foundation. Keep bottom flush and center left to right. Weight to keep flat and set aside to dry.
2. Place store and shed walls face down on your work surface.
3. Glue 1/8" sq. basswood bracing to backs of wall as shown. Be sure to leave enough space for the bracing to fit on the end walls. See Final Assembly diagram for reference.
4. Glue 1/16" sq. basswood to left & right edges of front and back wall to form the corner trim. See Photos for reference.
5. Glue foundation assembly to store walls as shown. See Final Assembly diagram for reference.
6. Glue .02 x 1/16 bracing to shed doors as shown.
7. Set aside all wall parts, weighting down to keep flat and allow to dry overnight.
8. Following the nail guides shown on the elevation drawings use a steel ruler and very fine pounce wheel to put nail holes in the store siding. Take great care when working on the front wall as it is very thin and easily broken. This step may be skipped if you don't want nail holes.
9. Using a brand new #11 hobby blade raise several boards on the clapboard siding by sliding the blade under the board and making a small 1/8" long cut along its width. Practice on a piece of scrap siding before trying it on the main walls. Be very careful and use very light pressure or you can easily destroy the walls.
10. Stain all walls, porch decking, foundation, and stair parts with black alcohol and paint wash. Set aside to dry overnight. See Tips section for stain formula.
11. Apply small streaks of rubber cement to the clapboard siding where you want missing paint. The rubber cement will block paint from covering siding where it is applied.
12. Brush or spray paint clapboard walls with Polly Scale Reefer White. Use two thin coats, allow to dry between coats.
13. Once dry, lightly scrape off the rubber cement with clean pencil eraser or a old hobby knife. Be careful not to damage wood.
14. Using a dull hobby knife, lightly scrape some of the Reefer White off the siding to give it a weathered look. Scrape one board at a time working across the width of the wall. Be very careful not to cut into the wood.
15. Wash all the walls with a coat of plain black alcohol stain, no paint added. Set aside to dry.

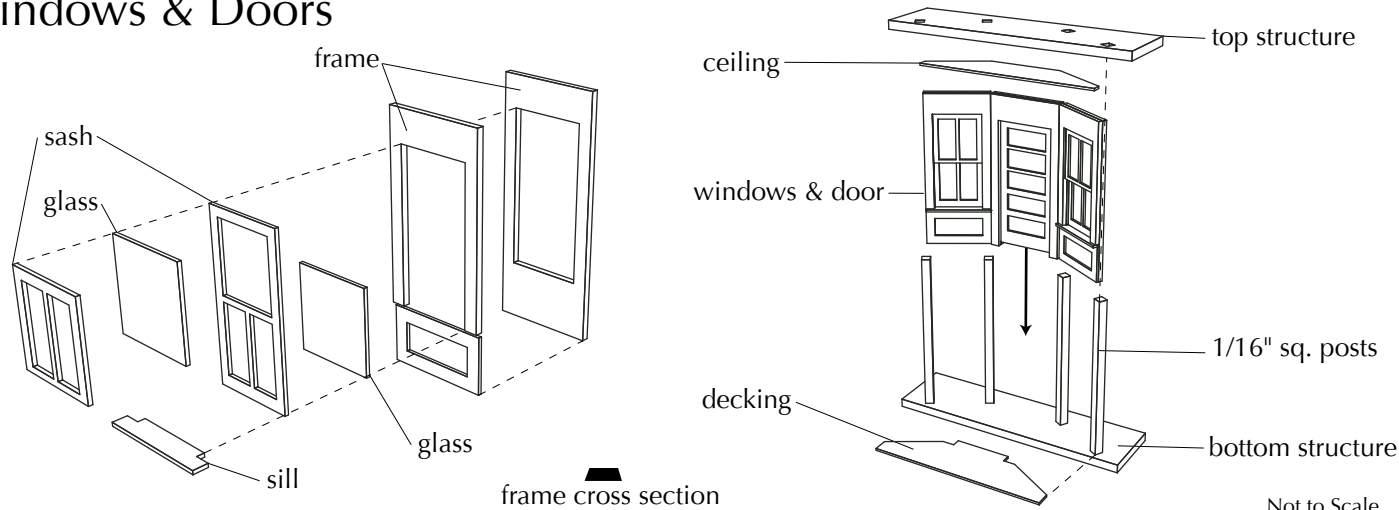
Steps and Porch



Steps and Porch:

1. Firmly press stringers into template but don't glue in place. Glue treads to stringers. Repeat to make 3 sets of stairs.
2. Glue porch substructure together as shown.
3. Glue skirt and decking on sub-structure keeping decking flush to back edge of substructure.
4. Paint ends of substructure Polly Scale Grimy Black and allow to dry.
5. Glue stairs to each end of porch sub-structure as shown and set aside to dry.

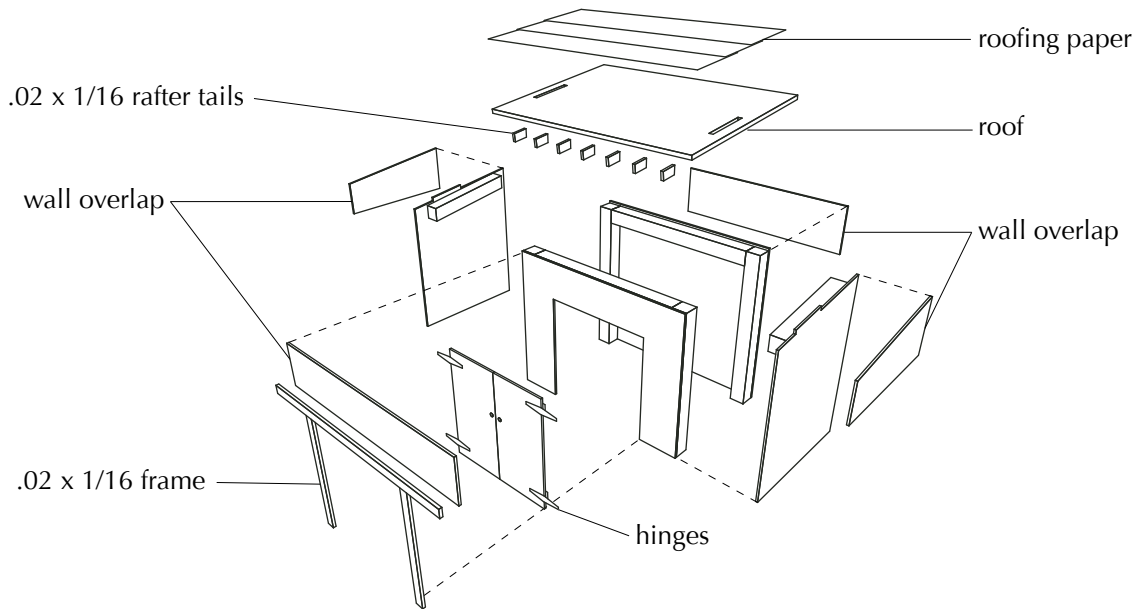
Windows & Doors



Windows & Doors:

1. Carefully cut frames and sashes from carrier sheet using a sharp hobby knife.
 2. Gently scrape along the frame side edges to remove a very small amount of the outside back corner. The laser cutter leaves a bevel on the frames as it cuts through the plywood. See frame cross-section above. The frames are cut .0025 wide on each side to ensure a proper flush fit on the front face once the back corner is scraped off.
 3. Glue frame halves together using either yellow wood glue or CA glue.
 4. Carefully test fit sashes into frame. If the sashes bow, scrape along sides to ensure proper fit as described above.
 5. Glue glass to back of sashes using a very small amount of CA glue.
 6. Glue sashes into frames.
- Repeat steps 1-6 for all frames.
7. Wait to attach window sill in Final Assembly step.
 8. Cut a small piece of craft paper roofing and glue it to the back of the frame as a window shade.
 9. Glue 1/16" sq. posts into bottom structure.
 10. Glue windows, doors and top structure onto support posts.
 11. Glue decking and ceiling onto top and bottom structure.

Shed



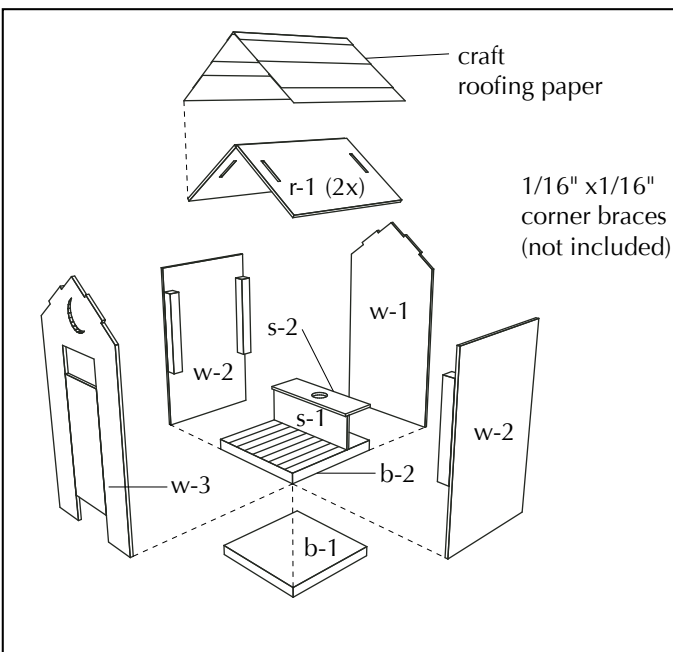
Not to Scale

Shed:

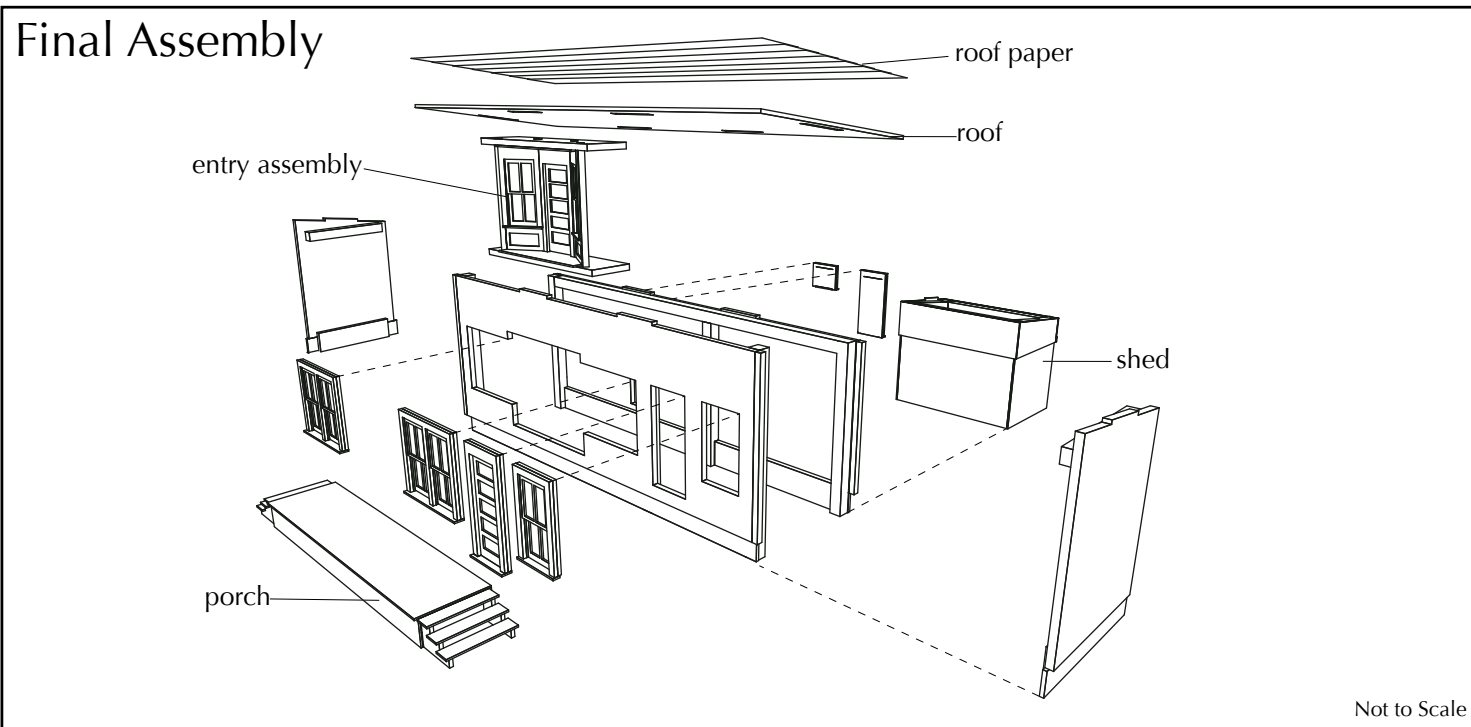
1. Glue wall overlap parts to front, and side walls. If shed will stand separate from store also glue wall overlap to back wall, otherwise leave it off.
2. Glue side walls to front and back walls.
3. Glue strap hinges to doors and front wall and allow to dry.
4. Glue .02 x 1/16 frame to front wall, overlapping strap hinges.
5. Glue roof to walls.
6. Glue roofing paper strips to roof starting at front edge. Overlap strips by 1/3. Paint roof paper grimy black and allow to dry.
7. Cut short pieces of .02 x 1/16 stripwood to use as rafter tails. Cut parts longer than needed and glue in place. Once dry trim flush with roof using straight nail clippers.
8. Dry brush Polly Scale Aged White on roof, streaking the paint from the high end to low end. Less is more.

Outhouse

1. Scored siding should face outward.
2. Paint or stain parts before removing from carrier sheet.
3. Glue base b-1 & b-2 together before painting or staining.
4. Remove parts from carrier sheet using a hobby knife.
5. Do not remove door from front wall w-3.
6. Glue seat front s-1 to seat top s-2 and set aside to dry.
7. Glue back wall w-1 to one of the side walls w-2.
8. Glue back and side wall assembly to base b-2.
9. Glue seat assembly to wall and base assembly.
10. Glue second side wall w-2 to wall and base assembly.
11. Glue front wall w-3 to wall and base assembly.
12. Glue 2 roof halves r-1 to top of walls aligning onto tabs.
13. Cut roof paper to width of roof and apply overlapping layers.
14. To open door use light pressure to crack hangers without breaking.



Not to Scale



Notes:

1. Glue entry assembly into front wall from back.
2. Glue end walls to front and back walls.
5. Glue windows, doors and sills into walls.
6. Glue shed onto back of store.
7. Glue roof onto walls.
8. Glue roofing paper strips to roof starting at front edge. Overlap strips by 1/3. Paint roof paper grimy black and allow to dry.
9. Dry brush roof with Antique White.
10. Drill a hole through the roof and glue the smoke jack casting in place. When dry apply "Pitch" around its base. See Tips pages for "Pitch" formula. See reference photos for location.
11. Cut out Dr. Pepper Sign and fold in half.
12. Using sign as a gauge bend sign hanger wire as shown in reference photo.
13. Drill two holes in front wall to accept sign hanger.
14. Apply white glue to one half of sign and place on hanger wire, folding other half of sign over wire and sealing halves together.
15. Insert hanger wire into holes in building wall.
16. Assemble lights using plastic cement and insert into slot above door on front and back of building using CA glue.
17. Cut out post office sign, fold in half, gluing halves together. Glue into slot on left front of building.
18. Lightly brush dark gray or black weathering chalk on porch, around door base and streaking down from window frames. See reference photos.
19. Position building on layout or diorama and glue castings around building as shown in reference photos.
20. Assemble laser cut cardboard boxes (brown craft paper) using white glue. Once dry, wet down with black alcohol and while wet crush with thumb. Weight down until dry and then glue in place behind store.
21. Drill a small hole in either side of the utility pole to accept straight pins (not included) as wire insulators. Drill the holes about 1/8" from the top of the pole and angle in at 45 degrees. Using hard-wire cutters, cut the head and about 1/16" of the shaft off a metal-head household straight pin and insert into hole in utility pole. Position the pole near the building.

Congratulations,

Chris Jessee, Owner
KingMill Enterprises LLC.

Tips:

Tools:

1. Hobby knife and several new #11 blades.
2. Pounce wheel for adding nail holes to siding. Item Number: 15200 from Micromark - <http://www.micromark.com/> 1-800-225-1066
3. Northwest Shortline's "The Chopper" for cutting stripwood to length.
4. Hard wire cutter. Item Number: 82477 from Micromark - <http://www.micromark.com/> 1-800-225-1066
5. Small needle nose pliers for bending wire.
6. Pine vise and set of small drill bits #61-80.
7. Fine point tweezers for positioning small parts.
8. HO scale ruler.
9. Small metal squares for squaring corners.
10. Paint brush sizes - 1/4", 1/8", 3/0, 10/0
11. Small file set, both flat and round.
12. Mechanical pencil for marking.
13. North Eastern Scale Lumber HO scale 1x10s for applying wood glue. The best glue applicator ever.

Glues:

1. Elmer's white glue for roofing paper, signs and other paper parts.
2. Franklin Titebond yellow wood glue for wood parts.
3. Pacer's ZAP CA (cyanoacrylate) glue for metal and small plywood parts.
4. Testors Cement for Plastic Models (tube).
5. Testors Plastic Cement (liquid in bottle)

Black Alcohol Stain:

Black Alcohol Stain is used on nearly every part of the model to reduce sheen on paint and give a general weathered look. The alcohol carries the india ink into small cracks and crevices and quickly evaporates leaving the ink in the low areas. Mix 1 pint alcohol (70% concentration) with 2 teaspoons India Ink. This stain may also be tinted by mixing 1/2 ounce of alcohol stain with 1/8 ounce of Polly Scale paint in your choice of colors. Polly Scale "Dirt" color makes great looking weathered wood.

Weathering Powders:

Bragdon Enterprises makes a great line of weathering powders for adding the finishing touches of rust and dirt to your model. <http://www.bragdonent.com/weather.htm>
These powders are easily applied by brushing or rubbing them on the model. Test the powders on scrap material before applying to the finished model to get a feel for how they work.

Metal and Plastic Castings:

1. File or cut flash and seams off castings with a sharp #11 hobby knife or file.
 2. Wash in mild dish soap and warm water, rinsing thoroughly.
 3. Prime with gray Floquil® Figure Primer and allow to dry overnight.
 4. Paint as desired, avoiding bright colors. Allow to dry for several days.
 5. Apply black alcohol stain to dull the finish.
 6. Dry brush to add highlights.
 7. Brush or rub on weathering powders to simulate rust and soot.
- Parts manufactured by JAKS Ind. Inc., Smoky Mountain Miniatures and C.C. Crow, **DO NOT MAKE COPIES OF CASTINGS!**
Additional castings are available from: Smoky Mountain Miniatures: <http://www.smokeymountainminiatures.com/>,
Jaks Industries: <http://www.jaksind.com/> and C.C. Crow: <http://www.cccrow.com/>

Dry Brushing:

Dry brushing simulates highlights on the edges of windows, doors and details. Use Polly Scale Antique White. Work nearly all the paint out of the brush on a scrap of paper before applying the brush to the model so very little paint is left on the surface. Go easy, you can always add more later.

Tips:

Posters:

Saturate the posters with black alcohol stain and once dry lightly scuff the poster face with very fine sandpaper if you want a worn look. Working from the center out sand the back of the posters to a thin sheet being careful not to sand through. Take your time. Trim the posters from their carrier sheet leaving a small boarder. Apply a thin coat of white glue to the back of the sign and position it on the model. Overlap some posters and leave some edges curled loose for a worn look.

Decals:

1. KingMill decals are inkjet decals and must be sprayed with a clear finish before use. Testors[®] Lacquer Overcoat or Krylon[®] Crystal Clear works well.
 2. Cut out the individual decals and test fit.
 3. Place decal in warm water until it easily slides off of paper backing.
 4. Position decal on model and blot dry.
 5. Repeat steps 3 and 4 for each decal.
 6. Once the decals have dried, over spray with a protective sealer such as Testors[®] Dullcoat.
- Microscale[®] makes a variety of decal solutions that may be helpful in positioning and setting the decals.

Pitch:

Pitch is a tar based sealant used around openings in roofs and walls. Mix a few drops of gray or black water-based paint into a small pool of white glue to make a convincing "Pitch". Apply around vents, chimneys and other wall and roof penetrations using a small scrap of strip wood or a tooth pick. Allow to dry thoroughly and apply a light wash of Black Alcohol to flatten the finish.

End Grain:

Basswood has a very porous end grain that is very difficult to paint. Seal the grain prior to painting using CA glue. Allow to dry before painting.

Follow the instructions as presented in the recommended assembly order. Experienced modelers may want to assemble the kit in an alternate order. If you choose to deviate from the instructions, read the instructions thoroughly before proceeding and take care to test fit parts before gluing them in place. If any items are missing from the kit, call or email us for replacements. Suggestions regarding improvements to current kits or ideas for future kits are always welcome.

Newspapers:



Stain newspapers with black alcohol or a thin yellow stain for a very old appearance and allow to dry. Cut out papers. For a neat appearance, fold or roll and glue in place with white glue. For a old crumpled look, dip paper into water and roll into a ball. Partially unroll newspaper and glue in place with white glue.